



ASSEMBLY GUIDE

SL

BIKE RACK

PARTS INCLUDED

* Indicates bolts attached loosely to parts in required location. All other bolts and accessories are in bags / loose.

- | | |
|---|---|
| 1a) *M6 x 95mm Bolt (SL150 only) – Qty 1 | 11) M8 Washer – Qty 4 |
| 1b) *M6 x 80mm Bolt (SL100 only) – Qty 1 | 12) M8 Custom Washer – Qty 2 |
| 2) *M6 Nylock Nut – Qty 1 | 13) M8 Nylock Nut – Qty 4 |
| 3) *M6 Washer – Qty 2 | 14) Foot Pedal – Qty 1 |
| 4a) *M12 x 100mm & M12 x 105mm Bolts (SL150 only) – Qty 2 each | 15) *M8 x 25 Bolt – Qty 2 |
| 4b) *M12 x 85mm & M12 x 90mm Bolt (SL100 only) – Qty 2 each | 16) *M8 Nylock – Qty 2 |
| 5) *M12 Nylock Nut – Qty 4 | 17) *M8 Washer – Qty 4 |
| 6) *M12 Washer – Qty 8 | 18) 10mm Hitch Pin & R Clip |
| 7a) M10 x 85mm Bolt (SL150 only) – Qty 2 | 19) ½ Inch Hitch Pin & Lynch Pin |
| 7b) M10 x 70mm Bolt (SL100 only) – Qty 2 | 20) 24mm Spanner |
| 8) M10 Washer – Qty 4 | 21a) M8 x 50 Bolts (SL150 only) – Qty 2 per basket |
| 9) M10 Nylock Nut – Qty 2 | 21b) M8 x 65 Bolts (SL100 only) – Qty 2 Per basket |
| 10a) M8 x 85mm Bolt (SL150 only) – Qty 4 | 22) M8 Washer – 4 per basket |
| 10b) M8 x 70mm Bolt (SL100 only) – Qty 4 | 23) M8 Nylock Nut – 2 per basket |



SL RACK PART NAMES



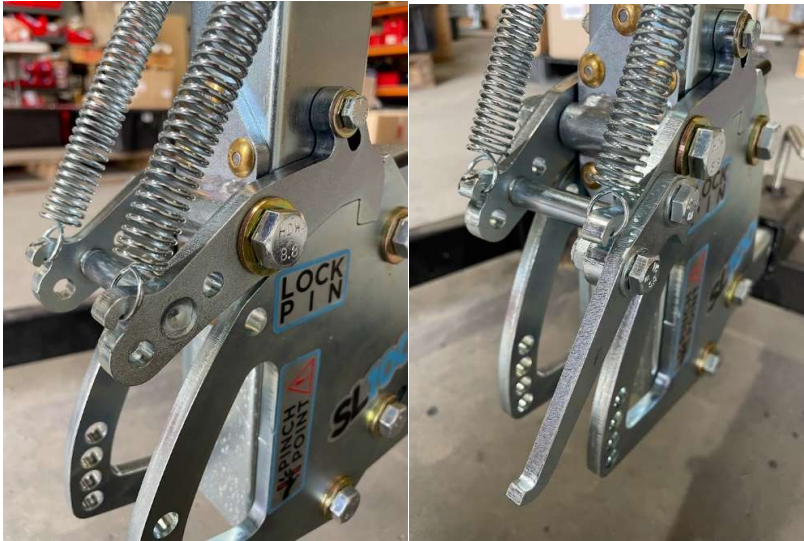
Step 1 - Install the Pivot into Vehicle Hitch or Garage Stand, tighten Anti-Wobble Bolt using 24mm Spanner (#20). Undo M12 x 100mm (SL150) or M12 x 85mm (SL100) Bolts, using 18mm & 19mm spanner, and install side plates on both sides with stickers facing out. The bottom bolt holes dictate mast position as shown. **NOTE: Do not tighten bolts fully just yet.**



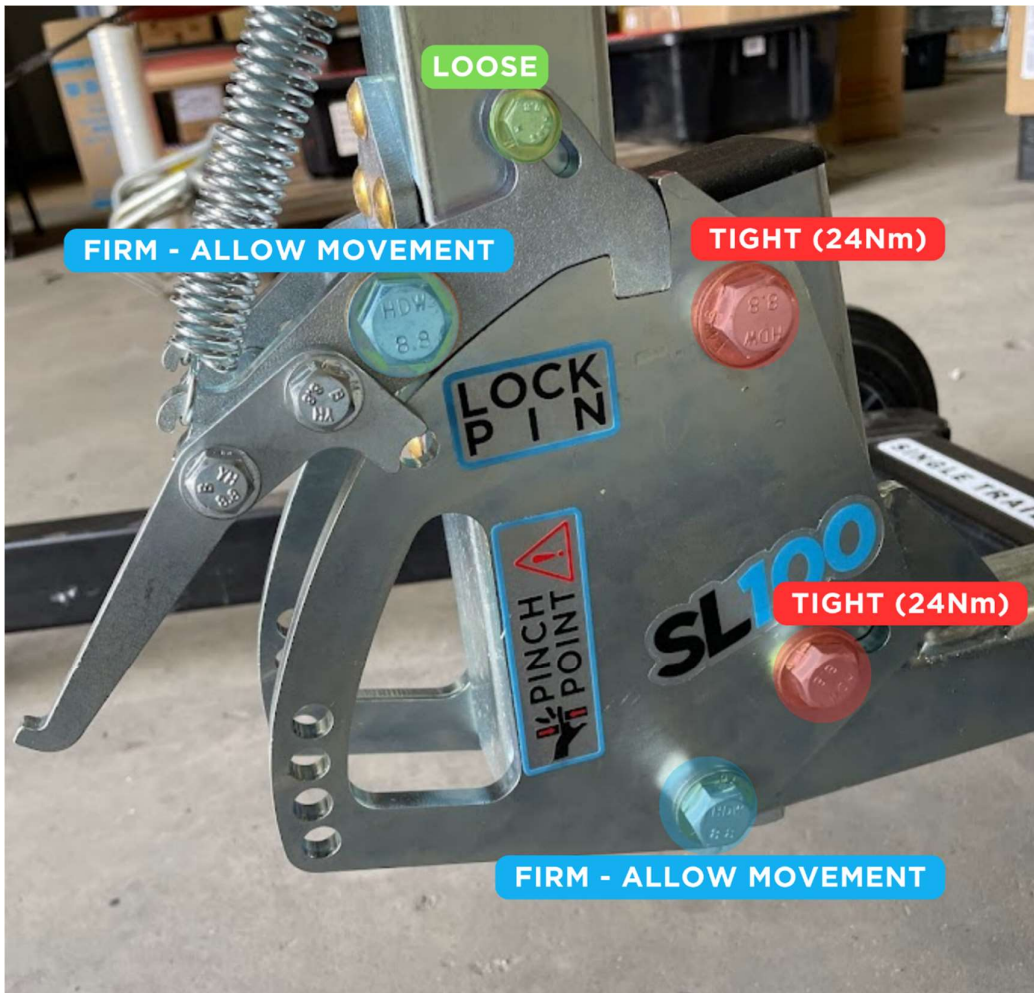
Step 2 – Install Upright Mast as shown by removing the M12 x 105mm (SL150) or M12 x 90mm (SL100) bolts and sliding it between the side plates. Rest the lock in position and re-install the M12 bolt through the plates and the bush attached to the upright (you may need a hammer to tap the bolt through). The M12 bolt needs to be moderately tightened, washers and bolts should NOT spin freely, overtightening can prevent pivot action.



Step 3 – Remove small M8 Bolts and install Foot Pedal (14).

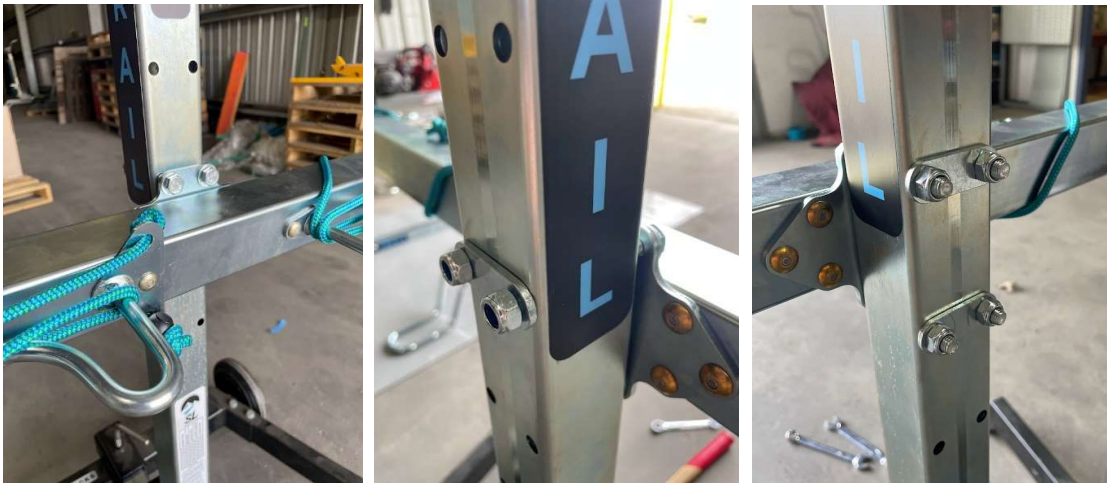


Step 4 – Tighten Pivot Bolts



Step 5 – Install Rear Bar using the M8 Bolts (#10) using a standard washer (#11) at the front and the Custom washer (#12) at the back. The rear bar can be installed in any of the 3 positions on the Upright Mast, we suggest using the middle position which fits a larger range of bikes, if you have longer or shorter bikes you can move the Rear Bar up or down to suit.

NOTE ORIENTATION – Wheel loops sit to the LEFT of the rope.



Step 6 – Install Top Tube using M10 bolts (#7). The “Single Trail” Sticker indicates correct orientation.



Step 7 – Install Wheel Baskets using M8 Bolts (#21). Ensure correctly orientated so wheel leans to the right.

